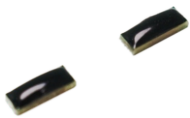


RTEC E-S™



- Tool tracking and sockets
- Tools of molding
- Expensive electronic devices
- Embedded

Environmental Specifications

Operating Temperature	-30°C to +85°C
Ambient Temperature	-30°C to +150°C
IP Classification	IP68
Shock and Vibration	MIL STD 810-F
Certifications	CE approved RoHS approved ATEX/IECEX certified
Warranty	1 year

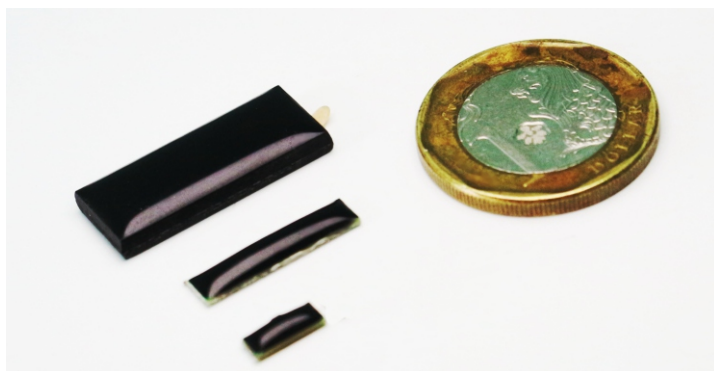
Customization Options

Encoding

Pre-encoding based on customers' specification, including EPC, User memory and other requests.

Appearance

Customized appearance design, including logo, barcode, text on the PET label etc.



Mechanical Specifications

Tag Materials	FR4
Surface Materials	Industry grade epoxy resin
Dimensions	2.4 x 8 x 2.1 mm
Weight	0.1 g
Attachment	Industry grade adhesive
Color	High performance epoxy resin Black by default

RF Specifications

RF Air Protocol	EPC Global Class 1 Gen2 ISO18000-6C
Operating Frequency	UHF 902-928 MHz (FCC)
Environment Compatibility	Optimized on metal
Read Range	Up to 0.9 m (on metal)
Polarization	Linear
IC Type	Impinj R6-P
Memory Configuration	EPC 128bit TID 96bit User 32bit

*Read ranges indicated in this datasheet is achieved by using our standard testing methodology. Actual performance will be different if different reader hardware and output power is applied.

Order Information

Product #	RTECX030301
Product Name	RTEC E-S ETSI
Product #	RTECX030302
Product Name	RTEC E-S FCC

RTEC Singapore

57 Mohamed Sultan Road
#01-05 Sultan Link
Singapore 238997

RTEC China

L3 Enterprise accelerator B,
Scientific innovation District,
MianYang City
Sichuan, China 621000

