

UHF RFID Reader Module



- Excellent Reading Performance
- Anti-collision Algorithm
- 18000-6C Full Compatible
- Low-Power Design
- Resist Bad Environment
- Strong Stability

Device Spec

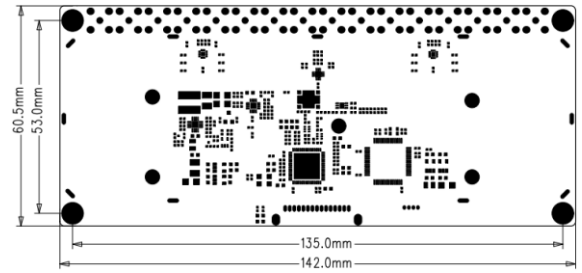
Dimensions	142 x 60.5 x 8 mm
Weight	167 g
Material	Die-cast aluminum+FR4
Input Voltage	DC 5V
Standby Current	<20mA +/-5%
Work Current	750mA +/-5%
Operating Temp.	- 20 °C - + 65 °C
Storage Temp.	- 40 °C - + 85 °C
Humidity	5%RH - 95%RH (no condensation)
Air Protocol	EPC global UHF Class 1 Gen 2 ISO 18000-6C
Frequency	902-928MHz FCC 865-868MHz ETSI
Output Power	0 – 33dBm
Output Power Precision	± 1dB
Output Power Flatness	± 0.2dB
ReceiveSensitivity	< -78 dBm
Reading Rate	> 400 tags/s
Tag RSSI	Supported
Ambient Temp Monitor	Supported
Host Communication	UART TTL Level
Band Rate	115200 bps
Cooling Mode	Air cooling
Antenna Interface	16 Port 50Ω RF connector SMA

Order Information

Product #	RTEC R1116
Product Name	R1116-M Reader Module

©Copyright 2015 RTEC Systems Pte Ltd All rights reserved

RTEC R1116-M



Mounting Hole $\Phi 3.2$ mm

Interface Definition

PIN#	Interface	Description
1	GND	Ground
2	GND	Ground
3	VIN	+5V
4	VIN	+5V
5	GPIO1	Output IO 3.3V TTL Level
6	GPIO2	
7	BUZZER	
8	LED	Control Reading LED
9	RXD1	UART1 Receive 3.3V TTL Level
10	TXD1	UART1 Transmit 3.3V TTL Level
11	RXD2	UART2 reserved
12	TXD2	UART2 reserved
13	IN1	Input IO 3.3V TTL Level
14	IN2	
15	RESET	



15 PIN W-TO-B Connector, 1.25mm

Optional: Development Board

Input Voltage	DC 12-24V (Recommend 12V3A)
LED	Red: Power, Blue: Reading
GPIO	2 input, 2 electric relay
Comm Interface	RS-232, RJ45



RTEC Singapore

57 Mohamed Sultan Road
#01-05 Sultan Link
Singapore 238997

RTEC China

L3 Enterprise accelerator B,
Scientific innovation District, MianYang City
Sichuan, China 621000